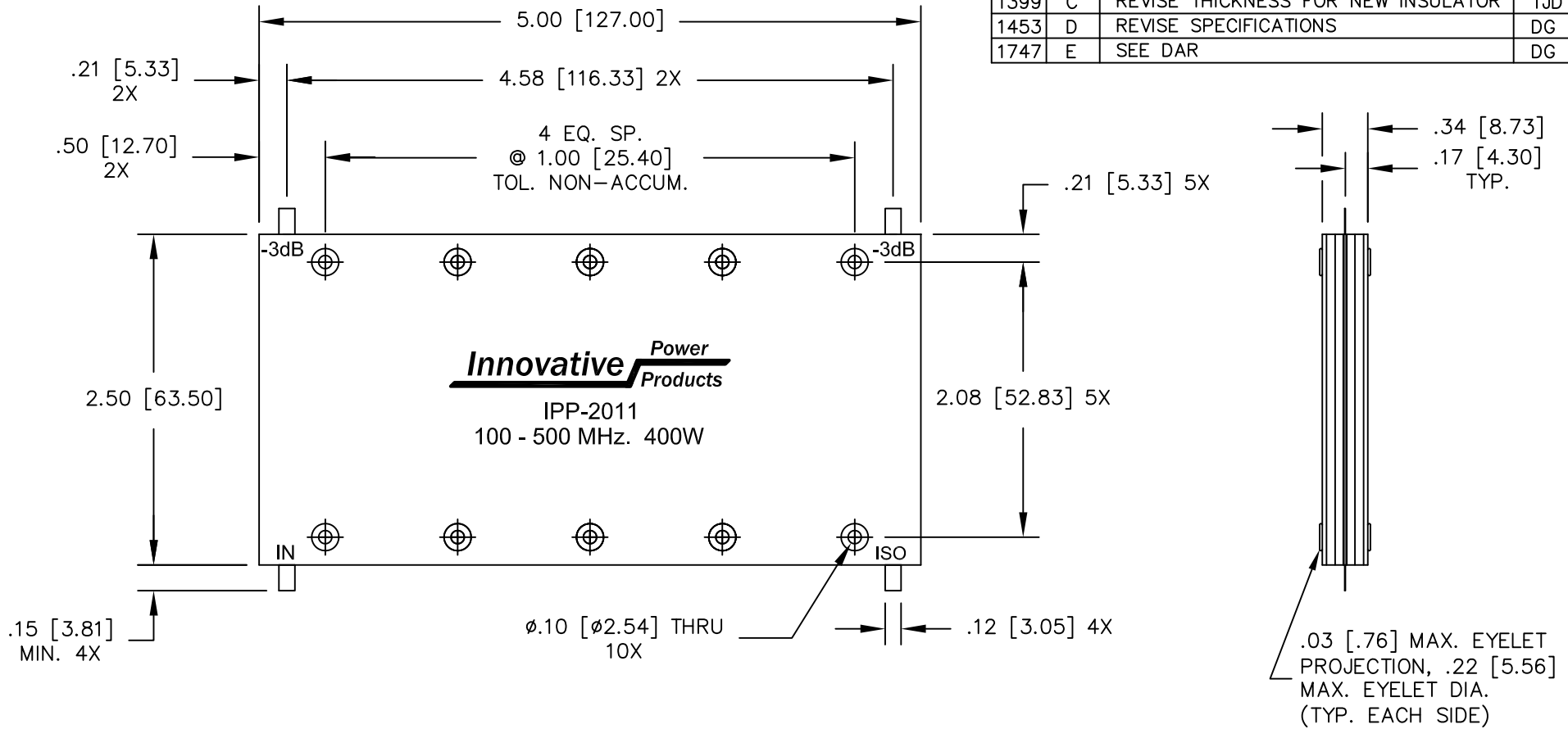


UNAUTHORIZED USE OF THIS
DRAWING IS STRICTLY PROHIBITED

DAR	REV	DESCRIPTION	APPVD	DATE
1040	A	INITIAL RELEASE	TJD	12/05
1185	B	REVISE SPEC. AND THICKNESS	TJD	9-07
1399	C	REVISE THICKNESS FOR NEW INSULATOR	TJD	2-08
1453	D	REVISE SPECIFICATIONS	DG	6-08
1747	E	SEE DAR	DG	2-09



NOTES

- LEAD MATERIAL:
99.99% PURE SILVER
.005" THICK
- SEE 90° APPLICATION
NOTE FOR FURTHER
INFORMATION.
- RoHS COMPLIANT.

ELECTRICAL SPECIFICATIONS

FREQUENCY:	100 - 500 MHz.
INSERTION LOSS:	< 0.4dB
VSWR:	< 1.25:1
ISOLATION:	> 18 dB
AMPLITUDE BALANCE:	±0.7 dB
PHASE BALANCE:	±5°
POWER:	400 WATT
TEMPERATURE:	-55°C TO 85°C

PACKAGE STYLE: 26A

MATERIAL	DWN	DG	DATE	12/05	Innovative Power Products
AL. ALLOY, 6061-T6	ENG	TJD	DATE	12/05	
FINISH CHEM FILM CLEAR PER MIL-DTL-5541, TYPE 2, REV F CLASS 3 ROHS COMPLIANT	MANUF	TP	DATE	12/05	
TOLERANCE .xx ±.02 [.50] IN [MM] .xxx ±.005 [.127] ANG. ±1/2°	CAGE CODE: 437R2		TITLE OUTLINE, COUP., 90°, 100 - 500 MHz, 400W		
	SHEET	OF	SCALE	1.25:1	SIZE B
	1	1			P/N IPP-2011
					REV. E