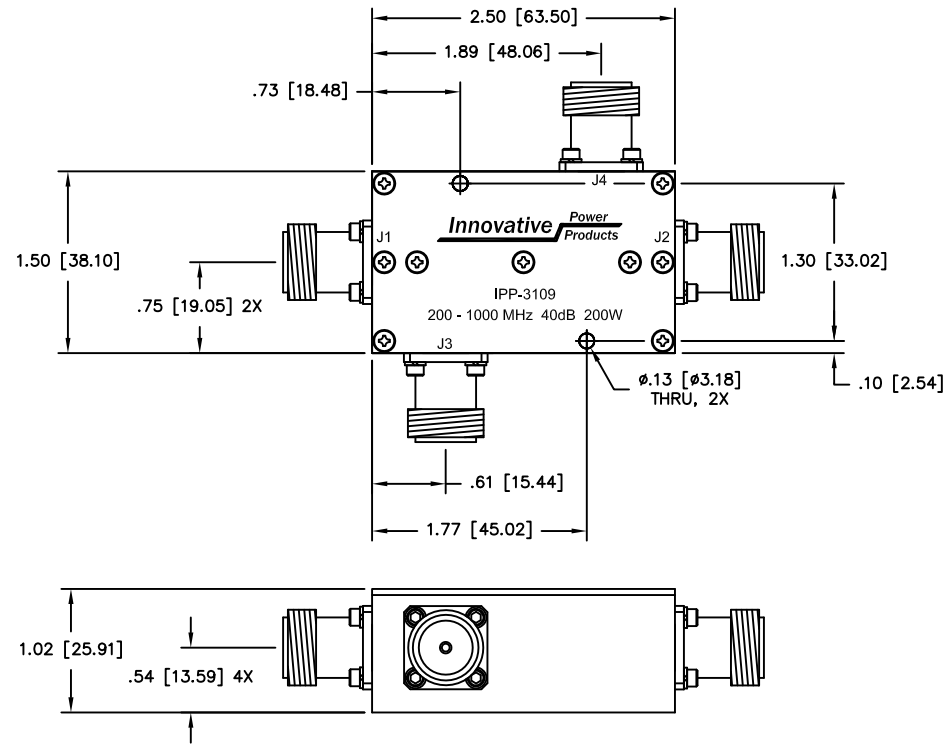


UNAUTHORIZED USE OF THIS
DRAWING IS STRICTLY PROHIBITED

DAR	REV	DESCRIPTION	APPVD	DATE
2193	1	PRE-RELEASE	DG	12-09

PRELIMINARY
DIMENSIONS AND SPECIFICATIONS
ARE SUBJECT TO CHANGE UNTIL
INITIAL RELEASE OF DRAWING.



NOTES

- CONNECTOR TYPE J1 - J4: TYPE "N" FEMALE

ELECTRICAL SPECIFICATIONS

FREQUENCY:	200 - 1000 MHz.
INSERTION LOSS:	<0.25 dB
VSWR:	<1.25:1
COUPLING:	40.0 ±1.5dB
DIRECTIVITY:	>20dB
COUPLED FLATNESS:	±0.50dB
POWER:	200 WATT
TEMPERATURE:	-55°C TO 85°C

- J1: INPUT
- J2: OUTPUT
- J3: -40dB (FWD COUPLED)
- J4: -40dB (REFL. COUPLED)

MATERIAL AL. ALLOY 6061-T651	DWN	DG	DATE	12-09	Innovative <i>Power</i> Products
	ENG	TJD	DATE	12-09	
FINISH CHEM FILM CLEAR, PER MIL-DTL-5541, TYPE 2, REV. F, CLASS 3 (ROHS COMPLIANT)	MANUF	DATE		TITLE DUAL DIRECTIONAL COUPLER 200 - 1000 MHz. 200 WATT, 40 dB	
	CAGE CODE: 437R2				
TOLERANCE .XX ±.02 .XXX ±.005 ANG. ±1/2°	SHEET	OF	SCALE	1:1	SIZE B
	1	1			P/N IPP-3109
					REV. 1