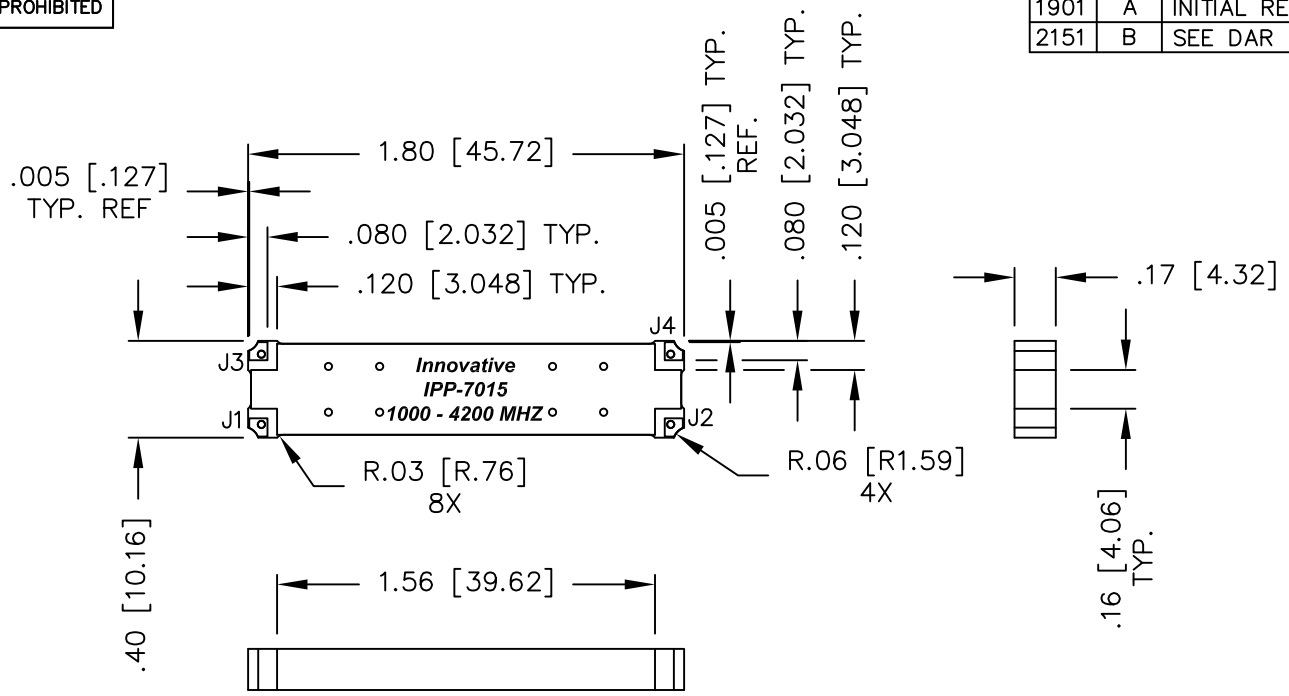


UNAUTHORIZED USE OF THIS
DRAWING IS STRICTLY PROHIBITED

DAR	REV	DESCRIPTION	APPVD	DATE
1901	A	INITIAL RELEASE	DG	6-09
2151	B	SEE DAR	DG	11-09



- NOTES:**
1. SEE SMD COUPLER APPLICATION NOTE FOR FURTHER INFORMATION.
 2. PARTS WITH RoHS MATT TIN AND RoHS NICKEL GOLD FINISHES ARE RoHS COMPLIANT.
 3. AVAILABLE IN TAPE AND REEL. SEE SMD COUPLER APPLICATION NOTE FOR FURTHER INFORMATION.

FINISH	
P/N	TYPE
IPP-7015	TIN/LEAD
IPP-7015RT	RoHS MATTE TIN
IPP-7015RG	RoHS NICKEL GOLD

ELECTRICAL SPECIFICATIONS

FREQUENCY: 1000 - 4200 MHz.
 INSERTION LOSS: <0.50 dB
 VSWR: <1.30:1
 ISOLATION: >18dB
 AMPLITUDE BALANCE: ±0.60dB
 PHASE BALANCE: ±5°
 POWER: 80 WATT
 TEMPERATURE: -55°C TO 85°C

PORT CONFIGURATION				
INPUT	J1	J2	J3	J4
J1	---	ISOLATION	-3dB<0 DEG	-3dB<-90 DEG
J2	ISOLATION	---	-3dB<-90 DEG	-3dB<0 DEG
J3	-3dB<0 DEG	-3dB<-90 DEG	---	ISOLATION
J4	-3dB<-90 DEG	-3dB<0 DEG	ISOLATION	---

MATERIAL	DWN S.Cornell	DATE 5-19-09	Innovative <i>Power</i> Products		
FINISH	ENG TJD	DATE 5-19-09			
SEE FINISH CHART	MANUF RR	DATE 5-19-09	TITLE OUTLINE		
TOLERANCE	CAGE CODE: 437R2		SMD COUPLER, 90°, 1000 - 4200 MHz. 80W		
IN [MM]	.XX ±.02 [.50] .XXX ±.010 [.254] ANG. ±1/2°	SHEET OF 1 1	SCALE 2:1	SIZE B	P/N IPP-7015*
					REV. B