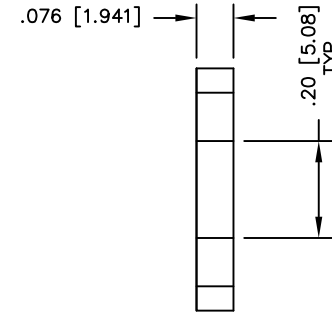
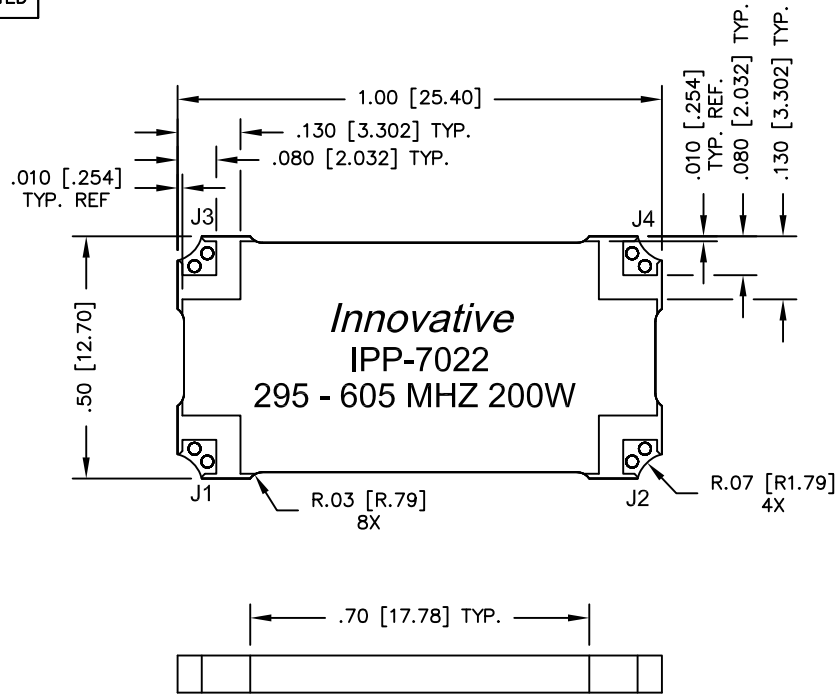


UNAUTHORIZED USE OF THIS
DRAWING IS STRICTLY PROHIBITED

DAR	REV	DESCRIPTION	APPVD	DATE
2047	A	INITIAL RELEASE	DG	8-09
2088	B	SEE DAR	DG	10-09
2238	C	SEE DAR	TJD	1-10



FINISH	
P/N	TYPE
IPP-7022	TIN/LEAD
IPP-7022RT	RoHS MATTE TIN
IPP-7022RG	RoHS NICKEL GOLD

NOTES:

1. SEE SMD COUPLER APPLICATION NOTE FOR FURTHER INFORMATION.
2. PARTS WITH RoHS MATT TIN AND RoHS NICKEL GOLD FINISHES ARE RoHS COMPLIANT.
3. AVAILABLE IN TAPE AND REEL. SEE SMD COUPLER APPLICATION NOTE FOR FURTHER INFORMATION.

ELECTRICAL SPECIFICATIONS

FREQUENCY: 295 - 605 MHz.
 INSERTION LOSS: < 0.25 dB
 VSWR: < 1.27:1
 ISOLATION: > 18 dB
 AMPLITUDE BALANCE: ±0.65 dB
 PHASE BALANCE: ±5°
 POWER: 200 WATT
 TEMPERATURE: -55°C TO 85°C

PORT CONFIGURATION

INPUT	A	B	C	D
J1	--	ISOLATION	-3dB<0 DEG	-3dB<-90 DEG
J2	ISOLATION	--	-3dB<-90 DEG	-3dB<0 DEG
J3	-3dB<0 DEG	-3dB<-90 DEG	--	ISOLATION
J4	-3dB<-90 DEG	-3dB<0 DEG	ISOLATION	--

MATERIAL	DWN DG	DATE 8-09				
FINISH	ENG TJD	DATE 8-09				
SEE FINISH CHART	MANUF TP	DATE 8-09	TITLE OUTLINE			
TOLERANCE	CAGE CODE: 437R2		SMD COUPLER, 90°, 295 - 605 MHZ 200W			
IN [MM]	SHEET 1	OF 1	SCALE 4:1	SIZE B	P/N IPP-7022*	REV. C
.XX ±.02 [.50]						
.XXX ±.010 [.254]						
ANG. ±1/2°						