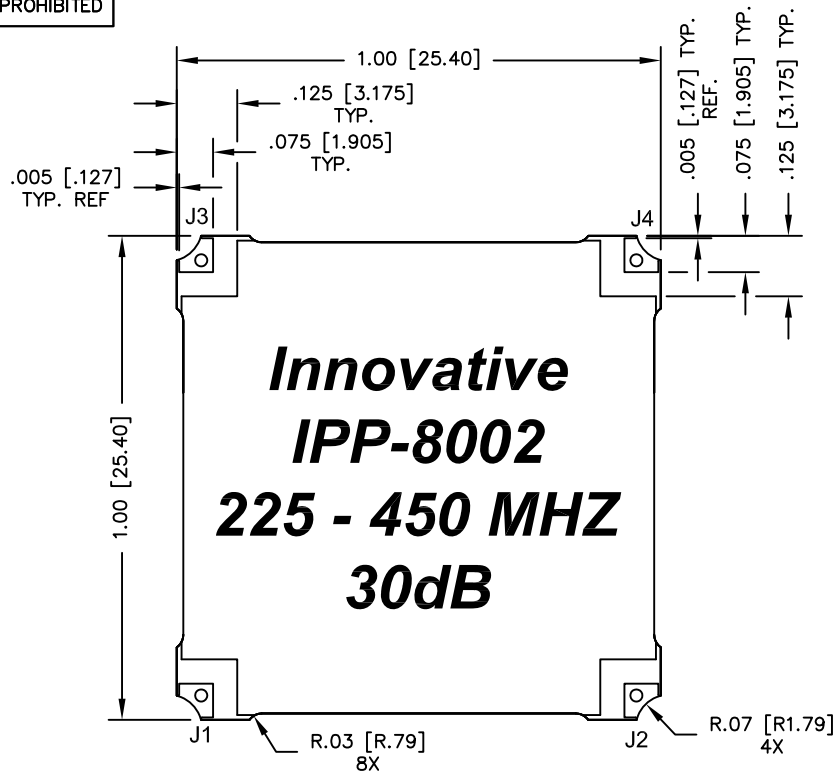
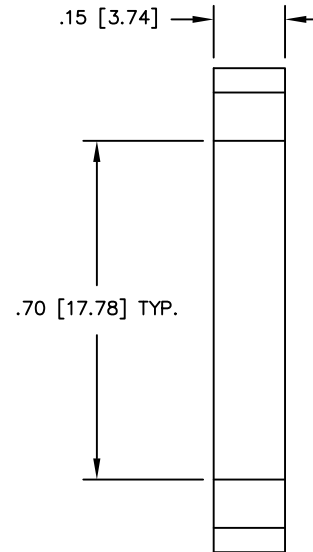


UNAUTHORIZED USE OF THIS
DRAWING IS STRICTLY PROHIBITED

DAR	REV	DESCRIPTION	APPVD	DATE
1798	1	PRE-RELEASE	DG	3-09



Innovative
IPP-8002
225 - 450 MHz
30dB



PRELIMINARY
DIMENSIONS AND SPECIFICATIONS
ARE SUBJECT TO CHANGE UNTIL
INITIAL RELEASE OF DRAWING.

FINISH	
P/N	TYPE
IPP-8002	TIN/LEAD
IPP-8002RT	RoHS MATTE TIN
IPP-8002RG	RoHS NICKEL GOLD

NOTES:

- SEE SMD COUPLER APPLICATION NOTE FOR FURTHER INFORMATION.
- PARTS WITH RoHS MATT TIN AND RoHS NICKEL GOLD FINISHES ARE RoHS COMPLIANT.
- AVAILABLE IN TAPE AND REEL. SEE SMD COUPLER APPLICATION NOTE FOR FURTHER INFORMATION.

ELECTRICAL SPECIFICATIONS

FREQUENCY: 225 - 450 MHz.
 INSERTION LOSS: <0.25 dB
 VSWR: <1.25:1
 COUPLING: 30dB ±1.5 dB
 DIRECTIVITY: >16 dB
 COUPLED FLATNESS: ±1.25 dB
 POWER: 200 WATT
 TEMPERATURE: -55°C TO 85°C

PORT CONFIGURATION			
INPUT	OUTPUT	FORWARD COUPLED	REFLECTED COUPLED
J1	J2	J3	J4 ADD 50Ω TERMINATION
J1	J2	J3 ADD 50Ω TERMINATION	J4
J2	J1	J4	J3 ADD 50Ω TERMINATION
J2	J1	J4 ADD 50Ω TERMINATION	J3

MATERIAL	DWN DG	DATE 3-09	Innovative <i>Power</i> Products	
FINISH SEE FINISH CHART	ENG TJD	DATE 3-09		
TOLERANCE	MANUF TP	DATE 3-09	TITLE OUTLINE, SMD COUPLER	
IN [MM]	CAGE CODE: 437R2		SINGLE DIRECTIONAL, 225 - 450 MHz. 200W	
.XX ±.02 [.50] .XXX ±.010 [.254] ANG. ±1/2°	SHEET 1	OF 1	SCALE 4:1	SIZE B
				P/N IPP-8002*
				REV. 1