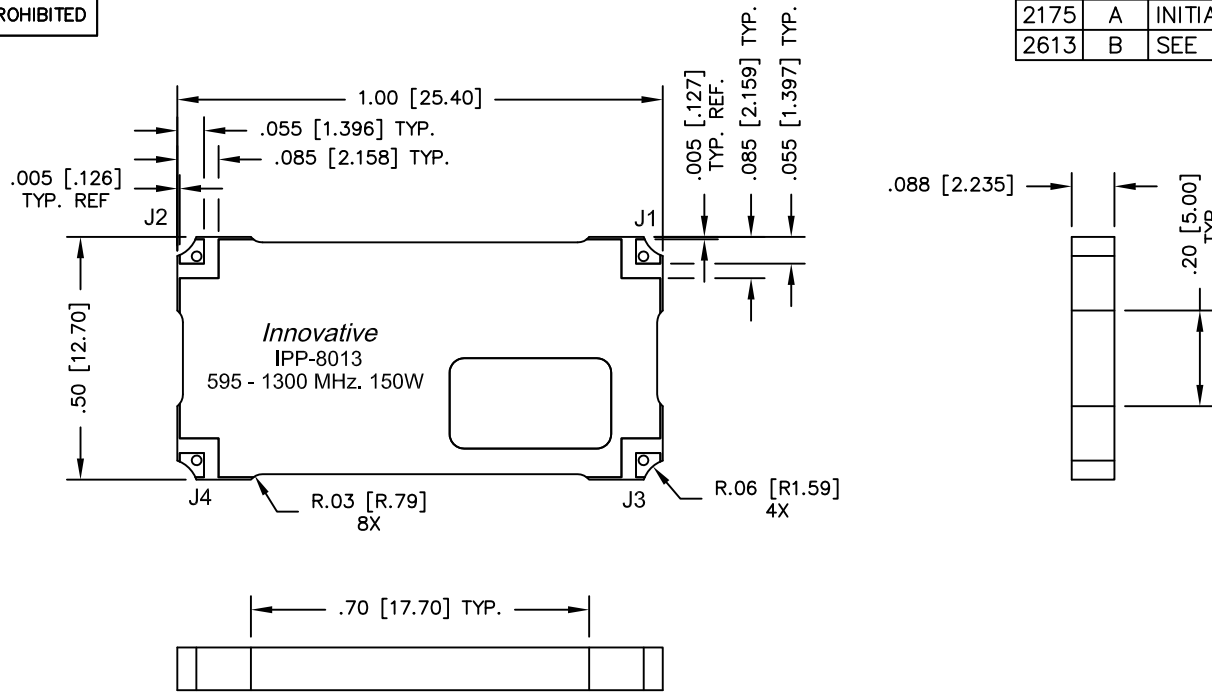


UNAUTHORIZED USE OF THIS  
DRAWING IS STRICTLY PROHIBITED

DAR	REV	DESCRIPTION	APPVD	DATE
2175	A	INITIAL RELEASE	TJD	12-09
2613	B	SEE DAR	DG	7-10



FINISH	
P/N	TYPE
IPP-8013	TIN/LEAD

**NOTES:**

- SEE SMD COUPLER APPLICATION NOTE FOR FURTHER INFORMATION.
- AVAILABLE IN TAPE AND REEL. SEE SMD COUPLER APPLICATION NOTE FOR FURTHER INFORMATION.

PORT CONFIGURATION			
INPUT	OUTPUT	FORWARD COUPLED	REFLECTED COUPLED
J1	J2	J3	J4 ADD 50Ω TERMINATION

**ELECTRICAL SPECIFICATIONS**

FREQUENCY: 595 – 1300 MHz.  
 INSERTION LOSS: <0.25 dB  
 VSWR MAIN LINE: <1.25:1  
 VSWR CPL LINE: <2.5:1  
 COUPLING: 34dB ±1.0 dB  
 COUPLING FLATNESS: ±0.75 dB  
 DIRECTIVITY: >18 dB  
 POWER: 150 WATT  
 TEMPERATURE: -55°C TO +100°C

MATERIAL	DWN DG	DATE 11-09	
	ENG TJD	DATE 11-09	
FINISH SEE FINISH CHART	MANUF	DATE	TITLE OUTLINE, SMD COUPLER SDC, 595 - 1300 MHz 34dB 150W
	CAGE CODE: 437R2		SIZE B
TOLERANCE IN [MM]	.XX ±.02 [.50] .XXX ±.010 [.254] ANG. ±1/2°	SHEET OF 1 1	SCALE 4:1
		REV. B	P/N IPP-8013