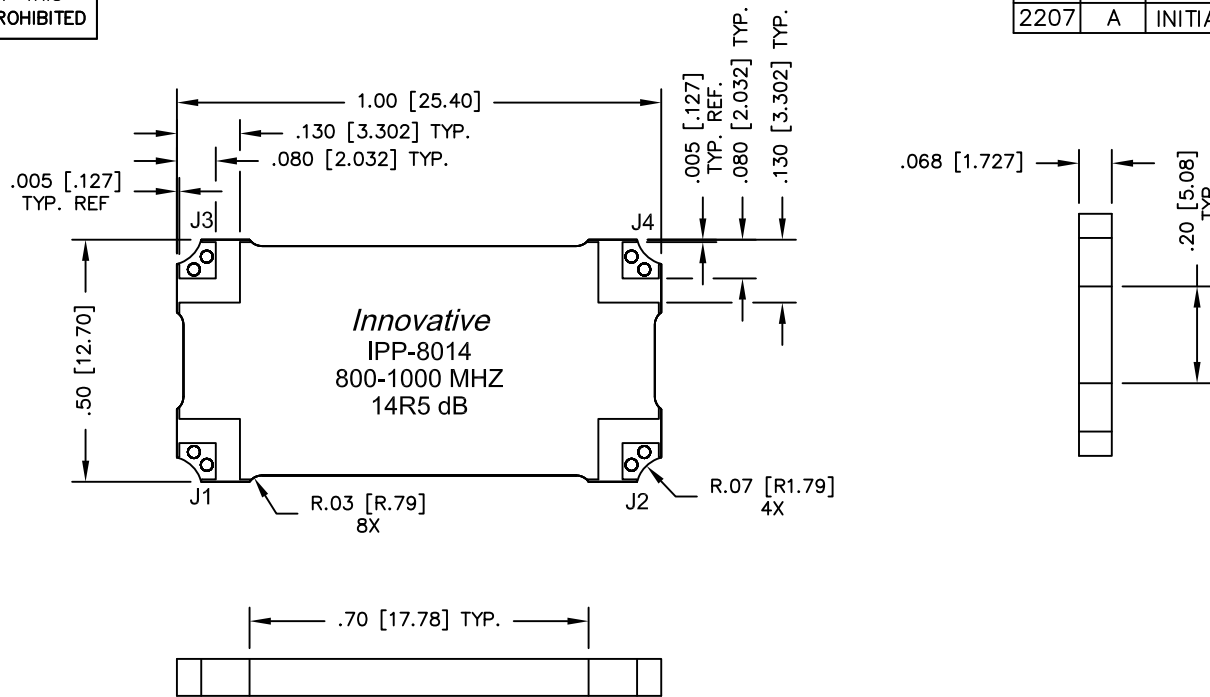


UNAUTHORIZED USE OF THIS
DRAWING IS STRICTLY PROHIBITED

DAR	REV	DESCRIPTION	APPVD	DATE
2207	A	INITIAL RELEASE	TJD	12-09



FINISH	
P/N	TYPE
IPP-8014	TIN/LEAD
IPP-8014RT	RoHS MATTE TIN
IPP-8014RG	RoHS NICKEL GOLD

NOTES:

1. SEE SMD COUPLER APPLICATION NOTE FOR FURTHER INFORMATION.
2. PARTS WITH RoHS MATT TIN AND RoHS NICKEL GOLD FINISHES ARE RoHS COMPLIANT.
3. AVAILABLE IN TAPE AND REEL. SEE SMD COUPLER APPLICATION NOTE FOR FURTHER INFORMATION.

ELECTRICAL SPECIFICATIONS

FREQUENCY: 800 – 1000 MHz.
 INSERTION LOSS: <0.30 dB
 VSWR: <1.25:1
 COUPLING: 14.5dB ±0.3 dB
 DIRECTIVITY: >20 dB
 POWER: 100 WATT
 TEMPERATURE: -55°C TO +100°C

PORT CONFIGURATION			
INPUT	OUTPUT	FORWARD COUPLED	REFLECTED COUPLED
J1	J2	J3	J4 ADD 50Ω TERMINATION
J1	J2	J3 ADD 50Ω TERMINATION	J4
J2	J1	J4	J3 ADD 50Ω TERMINATION
J2	J1	J4 ADD 50Ω TERMINATION	J3

MATERIAL	DWN S.Cornell	DATE 11-5-09	Innovative <i>Power</i> Products	
FINISH	ENG TJD	DATE 11-5-09		
SEE FINISH CHART	MANUF RR	DATE 11-5-09	TITLE OUTLINE, SMD COUPLER	
TOLERANCE	CAGE CODE: 437R2		SDC, 800-1000 MHz. -14.5dB 100W	
IN [MM]	.XX ±.02 [.50]	.XXX ±.010 [.254]	ANG. ±1/2°	SHEET OF 1 1
	SCALE 4:1	SIZE B	P/N IPP-8014	REV. A