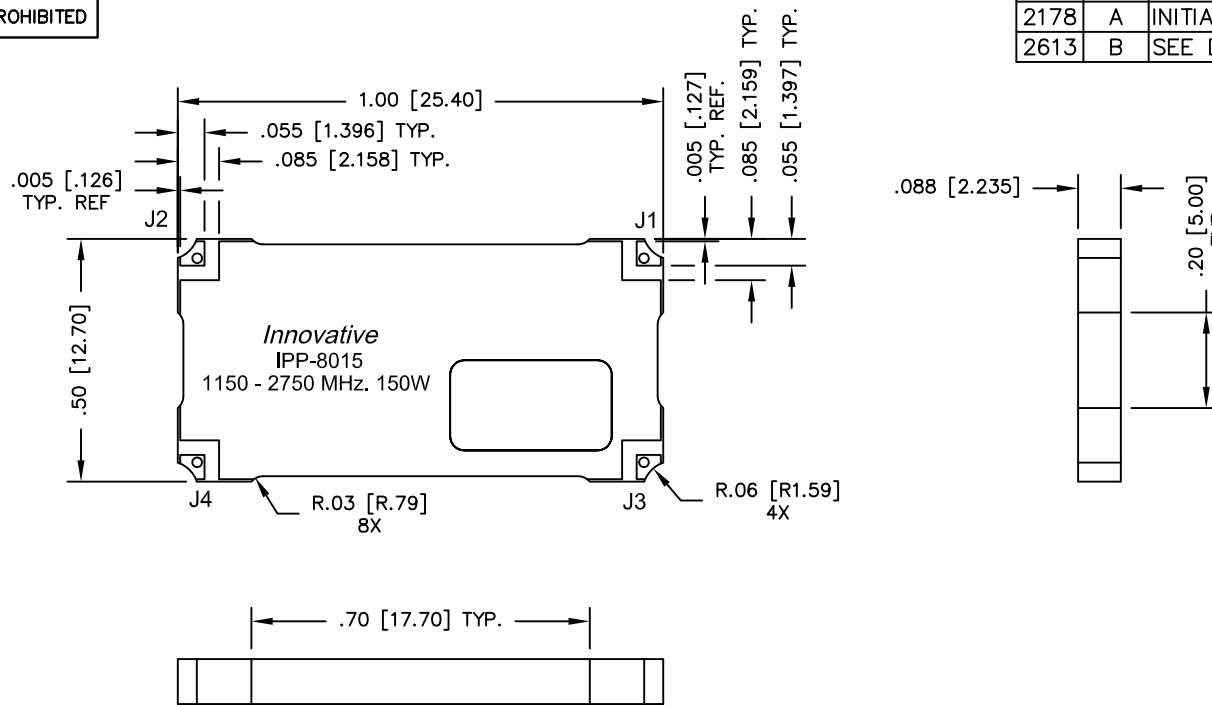


UNAUTHORIZED USE OF THIS  
DRAWING IS STRICTLY PROHIBITED

| DAR  | REV | DESCRIPTION     | APPVD | DATE  |
|------|-----|-----------------|-------|-------|
| 2178 | A   | INITIAL RELEASE | TJD   | 12-09 |
| 2613 | B   | SEE DAR         | DG    | 7-10  |



| FINISH   |          |
|----------|----------|
| P/N      | TYPE     |
| IPP-8015 | TIN/LEAD |

- NOTES:**
- SEE SMD COUPLER APPLICATION NOTE FOR FURTHER INFORMATION.
  - AVAILABLE IN TAPE AND REEL. SEE SMD COUPLER APPLICATION NOTE FOR FURTHER INFORMATION.

| PORT CONFIGURATION |        |                 |                        |
|--------------------|--------|-----------------|------------------------|
| INPUT              | OUTPUT | FORWARD COUPLED | REFLECTED COUPLED      |
| J1                 | J2     | J3              | J4 ADD 50Ω TERMINATION |

**ELECTRICAL SPECIFICATIONS**

FREQUENCY: 1150 - 2750 MHz.  
 INSERTION LOSS: <0.25 dB  
 VSWR MAIN LINE: <1.25:1  
 VSWR CPL LINE: <2.5:1  
 COUPLING: 34dB ±0.75 dB  
 DIRECTIVITY: >18 dB  
 POWER: 150 WATT  
 TEMPERATURE: -55°C TO +100°C

|                            |                  |            |   |              |        |
|----------------------------|------------------|------------|---|--------------|--------|
| MATERIAL                   | DWN DG           | DATE 11-09 |   |              |        |
|                            | ENG TJD          | DATE 11-09 |   |              |        |
| FINISH<br>SEE FINISH CHART | MANUF            | DATE       | TITLE<br>OUTLINE, SMD COUPLER                     |              |        |
|                            | CAGE CODE: 437R2 |            | SDC, 1150 - 2750 MHz 34dB 150W                    |              |        |
| TOLERANCE                  | SHEET 1 OF 1     | SCALE 4:1  | SIZE B  | P/N IPP-8015 | REV. B |
| IN [MM]                    |                  |            | .XX ±.02 [.50]<br>.XXX ±.010 [.254]<br>ANG. ±1/2° |              |        |