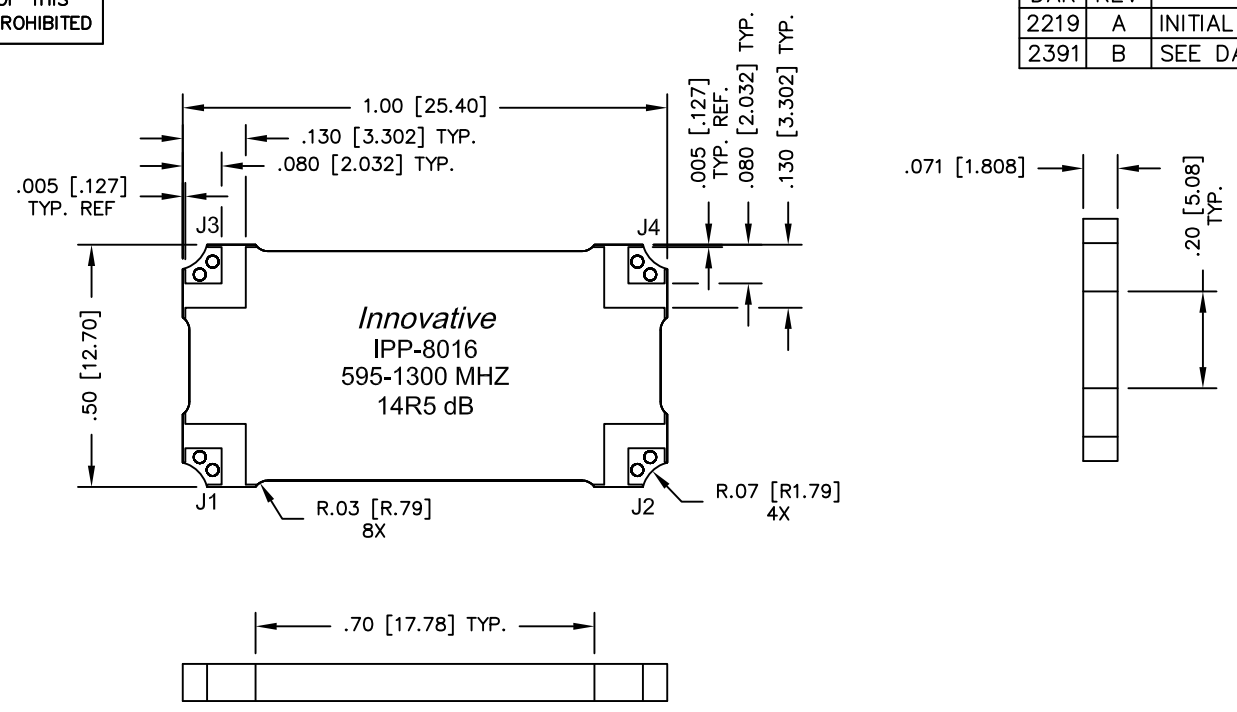


UNAUTHORIZED USE OF THIS
DRAWING IS STRICTLY PROHIBITED

DAR	REV	DESCRIPTION	APPVD	DATE
2219	A	INITIAL RELEASE	DG	12-09
2391	B	SEE DAR	DG	3-10



- NOTES:**
- SEE SMD COUPLER APPLICATION NOTE FOR FURTHER INFORMATION.
 - PARTS WITH RoHS MATT TIN AND RoHS NICKEL GOLD FINISHES ARE RoHS COMPLIANT.
 - AVAILABLE IN TAPE AND REEL. SEE SMD COUPLER APPLICATION NOTE FOR FURTHER INFORMATION.

ELECTRICAL SPECIFICATIONS

FREQUENCY: 595 - 1300 MHz.
 INSERTION LOSS: <0.4 dB
 VSWR: <1.25:1
 COUPLING: 14.5dB ±1.0 dB
 DIRECTIVITY: >18 dB
 POWER: 150 WATT
 TEMPERATURE: -55°C TO +85°C

FINISH	
P/N	TYPE
IPP-8016	TIN/LEAD
IPP-8016RT	RoHS MATTE TIN
IPP-8016RG	RoHS NICKEL GOLD

PORT CONFIGURATION			
INPUT	OUTPUT	FORWARD COUPLED	REFLECTED COUPLED
J1	J2	J3	J4 ADD 50Ω TERMINATION
J1	J2	J3 ADD 50Ω TERMINATION	J4
J2	J1	J4	J3 ADD 50Ω TERMINATION
J2	J1	J4 ADD 50Ω TERMINATION	J3

MATERIAL	DWN DG	DATE 11-5-09		
FINISH	ENG TJD	DATE 11-5-09		
SEE FINISH CHART	MANUF RR	DATE 11-5-09	TITLE	
CAGE CODE: 437R2			OUTLINE, SMD COUPLER	
TOLERANCE	SHEET OF		SDC, 595-1300 MHz. -14.5dB 150W	
IN [MM]	1	1	SCALE	4:1
.XX ±.02 [.50]			SIZE	B
.XXX ±.010 [.254]			P/N	IPP-8016
ANG. ±1/2°			REV.	B