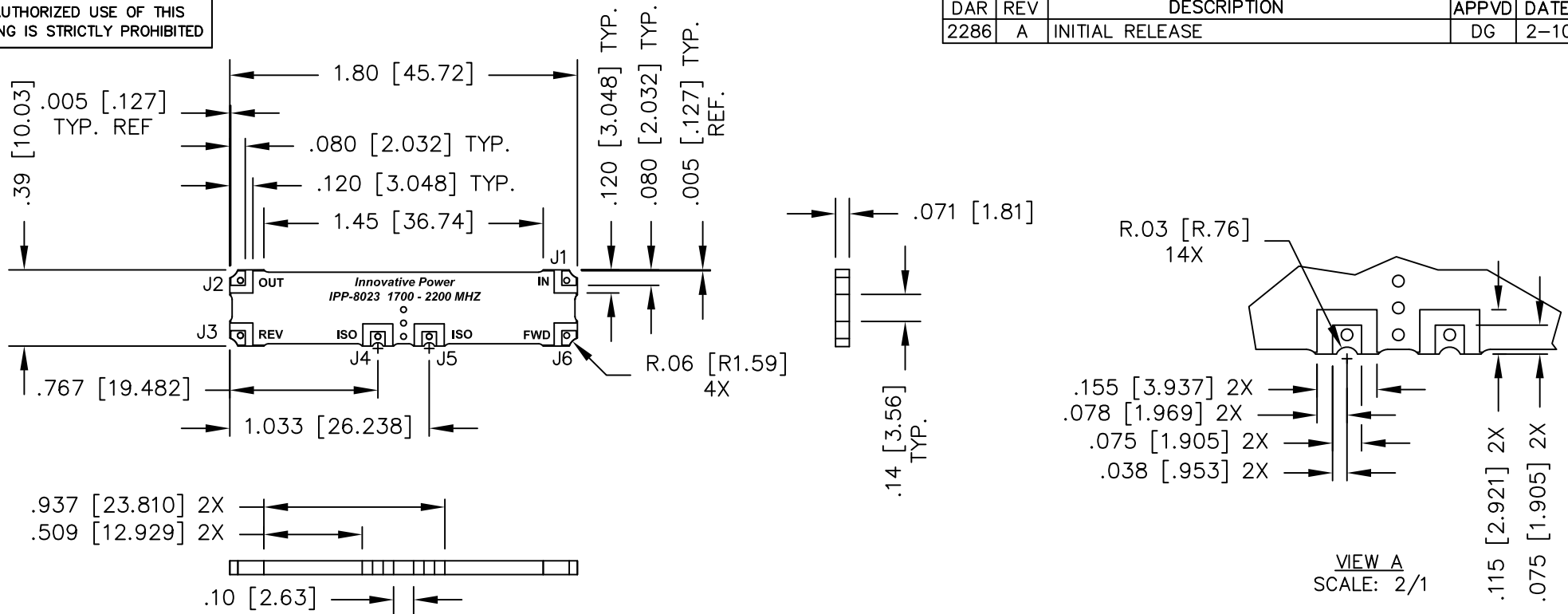


UNAUTHORIZED USE OF THIS
DRAWING IS STRICTLY PROHIBITED

DAR	REV	DESCRIPTION	APPV'D	DATE
2286	A	INITIAL RELEASE	DG	2-10



NOTES:

1. SEE SMD COUPLER APPLICATION NOTE FOR FURTHER INFORMATION.
2. PARTS WITH RoHS MATT TIN AND RoHS NICKEL GOLD FINISHES ARE RoHS COMPLIANT.
3. AVAILABLE IN TAPE AND REEL. SEE SMD COUPLER APPLICATION NOTE FOR FURTHER INFORMATION.

ELECTRICAL SPECIFICATIONS

FREQUENCY: 1700 – 2200 MHz.
 INSERTION LOSS: <0.50 dB
 VSWR: <1.25:1
 DIRECTIVITY: >20dB
 FORWARD COUPLING: 38.0±1dB
 REFL. COUPLING: 14.5±1dB
 POWER: 175 WATT
 TEMPERATURE: -55°C TO 85°C

FINISH	
P/N	TYPE
IPP-8023	TIN/LEAD
IPP-8023RT	RoHS MATTE TIN
IPP-8023RG	RoHS NICKEL GOLD

PORT CONFIGURATION				
INPUT	OUTPUT	FORWARD COUPLED	REFLECTED COUPLED	ISOLATION
J1	J2	J6 -38.0dB	J3 -14.5dB	J4, J5 ADD 50Ω TERMINATION

MATERIAL	DWN DG	DATE 1-10	Innovative Power Products			
FINISH SEE FINISH CHART	ENG TJD	DATE 1-10				
TOLERANCE	CAGE CODE: 437R2		TITLE SMD COUPLER, DDC, 1700 - 2200 MHz. 175W			
IN [MM]	SHEET 1	OF 1	SCALE 2:1	SIZE B	P/N IPP-8023*	REV. A