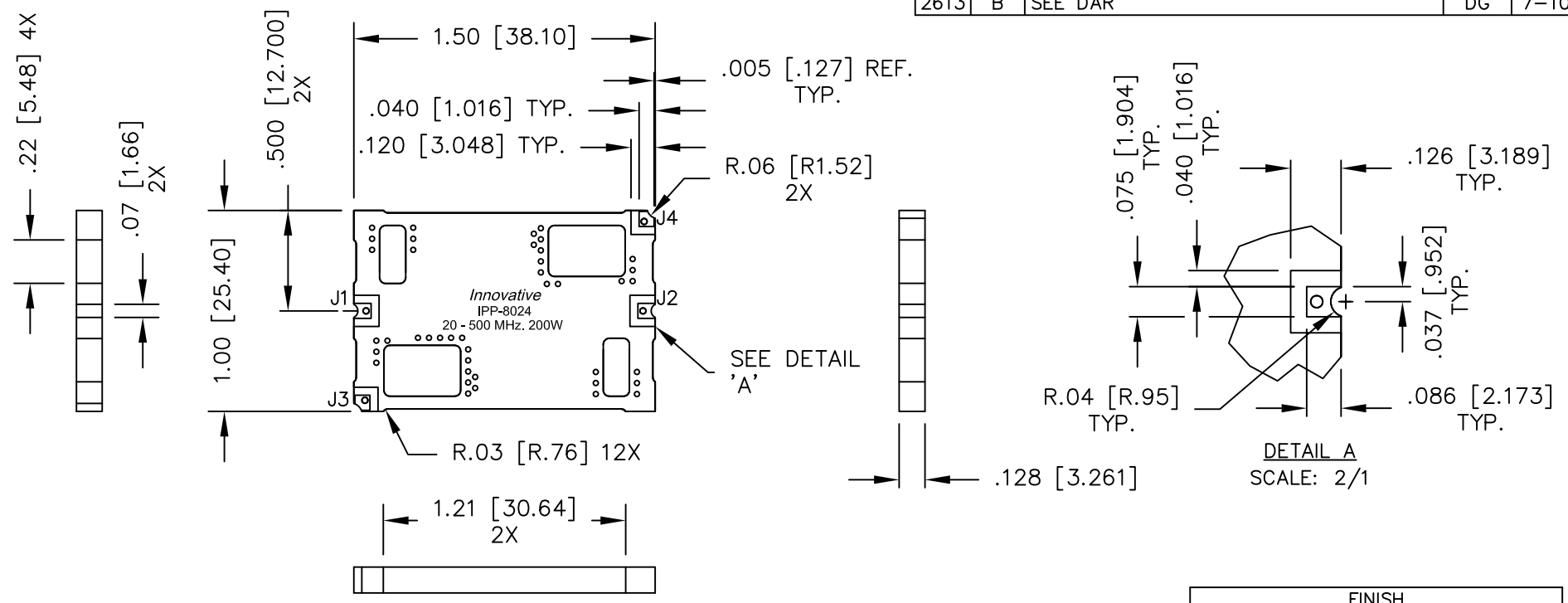


UNAUTHORIZED USE OF THIS
DRAWING IS STRICTLY PROHIBITED

DAR	REV	DESCRIPTION	APPVD	DATE
2302	A	INITIAL RELEASE	TJD	2-10
2613	B	SEE DAR	DG	7-10



- NOTES:**
- SEE SMD COUPLER APPLICATION NOTE FOR FURTHER INFORMATION.
 - AVAILABLE IN TAPE AND REEL. SEE SMD COUPLER APPLICATION NOTE FOR FURTHER INFORMATION.

ELECTRICAL SPECIFICATIONS

FREQUENCY:	20 - 500 MHz.
INSERTION LOSS:	<0.25 dB
VSWR:	<1.25:1
DIRECTIVITY:	>20dB
COUPLING:	50.0±1dB
COUPLED FLATNESS:	±0.6dB
POWER:	200 WATT
TEMPERATURE:	-55°C TO 85°C

FINISH	
P/N	TYPE
IPP-8024	TIN/LEAD

PORT CONFIGURATION			
INPUT	OUTPUT	FORWARD COUPLED	REFLECTED COUPLED
J1	J2	J3	J4
J2	J1	J4	J3

MATERIAL	DWN DG	DATE 2-10	Innovative Power Products		
FINISH SEE FINISH CHART	ENG TJD	DATE 2-10			
TOLERANCE	CAGE CODE: 437R2		TITLE OUTLINE SMD COUPLER, DDC, 20 - 500 MHz. 200W		
IN [MM]	SHEET OF	SCALE	SIZE	P/N	REV.
.XX ±.02 [.50] .XXX ±.010 [.254] ANG. ±1/2°	1 1	2:1	B	IPP-8024*	B