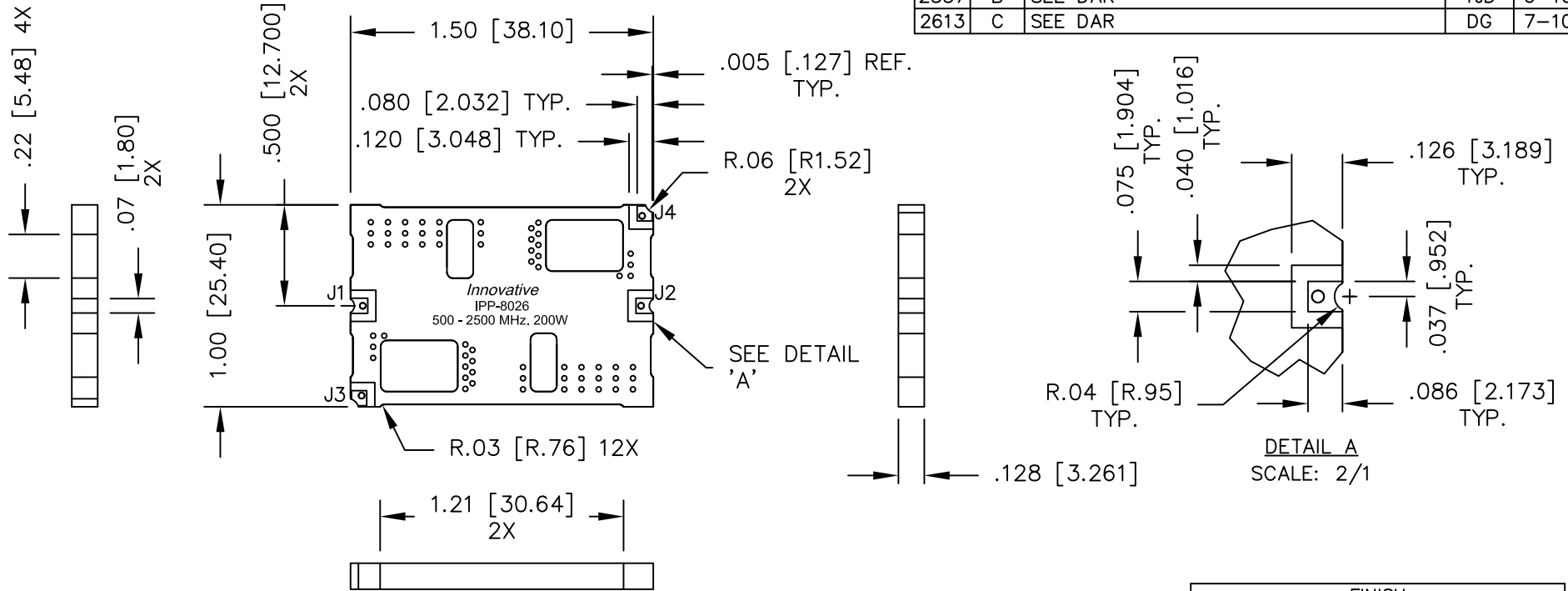


UNAUTHORIZED USE OF THIS
DRAWING IS STRICTLY PROHIBITED

DAR	REV	DESCRIPTION	APPVD	DATE
2532	A	INITIAL RELEASE	DG	6-10
2557	B	SEE DAR	TJD	6-10
2613	C	SEE DAR	DG	7-10



NOTES:

1. SEE SMD COUPLER APPLICATION NOTE FOR FURTHER INFORMATION.
2. AVAILABLE IN TAPE AND REEL. SEE SMD COUPLER APPLICATION NOTE FOR FURTHER INFORMATION.

ELECTRICAL SPECIFICATIONS

FREQUENCY: 500 – 2500 MHz.
 INSERTION LOSS: <0.25 dB
 VSWR: <1.25:1
 DIRECTIVITY: >20dB
 COUPLING: 36.0±1.0dB
 COUPLED FLATNESS: ±0.75dB
 POWER: 200 WATT
 TEMPERATURE: -55°C TO 85°C

FINISH	
P/N	TYPE
IPP-8026	TIN/LEAD

PORT CONFIGURATION			
INPUT	OUTPUT	FORWARD COUPLED	REFLECTED COUPLED
J1	J2	J3	J4
J2	J1	J4	J3

MATERIAL	DWN DG	DATE 2-10	Innovative Power Products			
FINISH SEE FINISH CHART	ENG TJD	DATE 2-10				
TOLERANCE	CAGE CODE: 437R2		TITLE OUTLINE SMD COUPLER, DDC, 500 - 2500 MHz, 200W			
IN [MM]	SHEET 1	OF 1	SCALE 2:1	SIZE B	P/N IPP-8026*	REV. C
.XX ±.02 [.50] .XXX ±.010 [.254] ANG. ±1/2°						