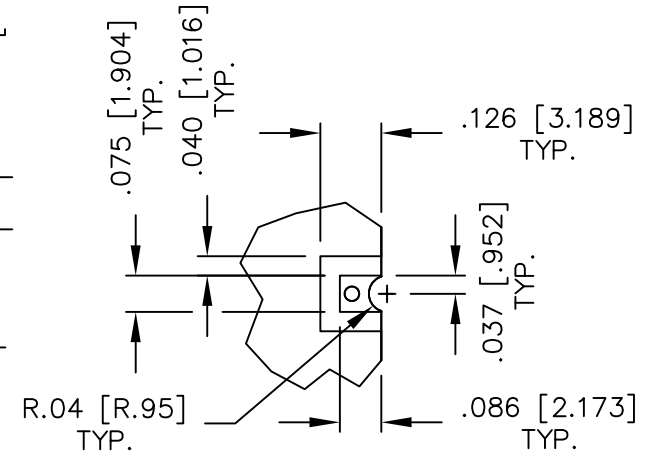
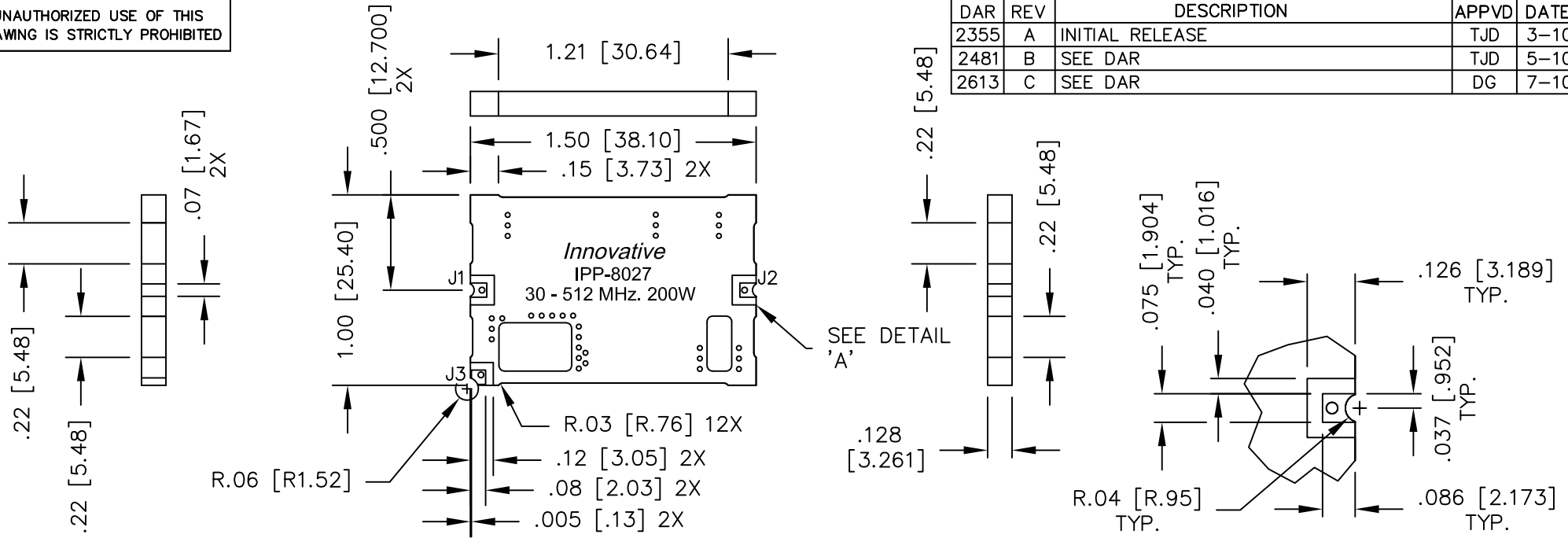


UNAUTHORIZED USE OF THIS  
DRAWING IS STRICTLY PROHIBITED

DAR	REV	DESCRIPTION	APPVD	DATE
2355	A	INITIAL RELEASE	TJD	3-10
2481	B	SEE DAR	TJD	5-10
2613	C	SEE DAR	DG	7-10



DETAIL A  
SCALE: 2/1

- NOTES:
1. SEE SMD COUPLER APPLICATION NOTE FOR FURTHER INFORMATION.
  2. AVAILABLE IN TAPE AND REEL. SEE SMD COUPLER APPLICATION NOTE FOR FURTHER INFORMATION.

ELECTRICAL SPECIFICATIONS

FREQUENCY: 30 - 512 MHz.  
 INSERTION LOSS: <0.25 dB  
 VSWR: <1.25: 1  
 DIRECTIVITY: >20dB  
 COUPLING: 50.0±1dB  
 COUPLED FLATNESS: ±0.5dB  
 POWER: 200 WATT  
 TEMPERATURE: -55°C TO 85°C

FINISH	
P/N	TYPE
IPP-8027	TIN/LEAD

PORT CONFIGURATION			
INPUT	OUTPUT	FORWARD COUPLED	REFLECTED COUPLED
J1	J2	J3	NA
J2	J1	NA	J3

MATERIAL	DWN S.Cornell	DATE 3-4-10	<b>Innovative Power Products</b>		
FINISH	ENG DG	DATE 3-10			
SEE FINISH CHART	MANUF	DATE	TITLE		
TOLERANCE	CAGE CODE: 437R2		OUTLINE		
IN [MM]	SHEET 1 OF 1	SCALE 2:1	SMD COUPLER, SDC, 30 - 512 MHz. 200W		
.XX ±.02 [.50] .XXX ±.010 [.254] ANG. ±1/2°			SIZE B	P/N IPP-8027*	REV. C