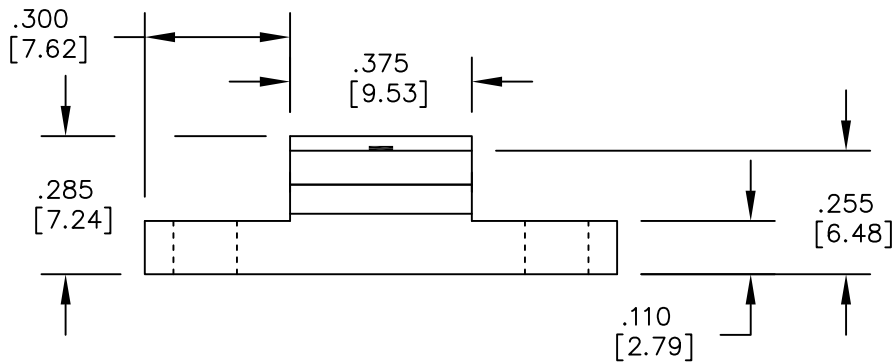
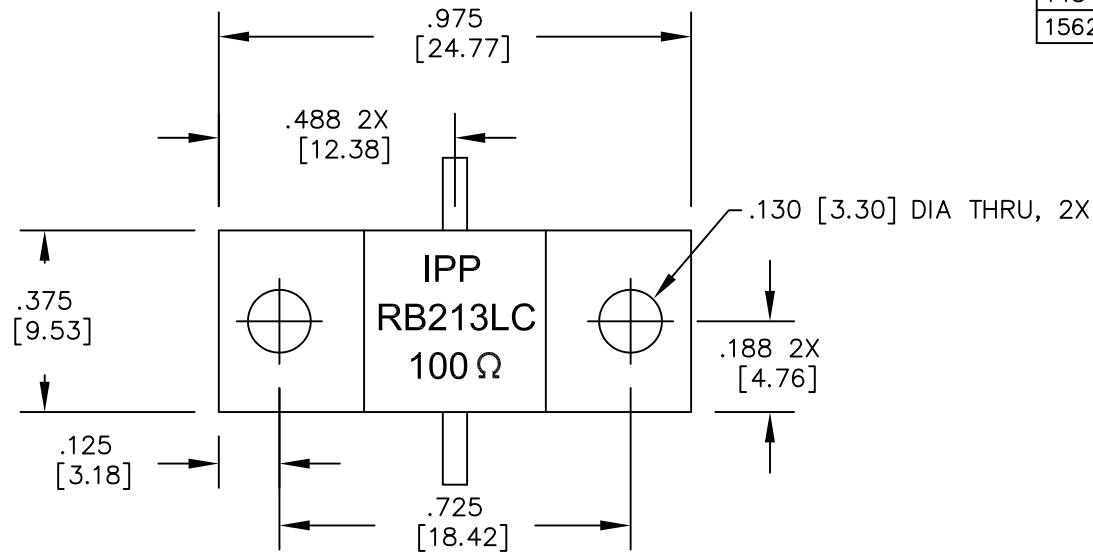


UNAUTHORIZED USE OF THIS
DRAWING IS STRICTLY PROHIBITED

DAR	REV	DESCRIPTION	APPVD	DATE
1371	A	INITIAL RELEASE	TJD	11-07
1484	B	CORRECTED ELECT SPECS	DG	9-08
1562	C	CHANGE DIMS TO MULT PLACES	DG	9-08



(REF: 100 OHM SHOWN)

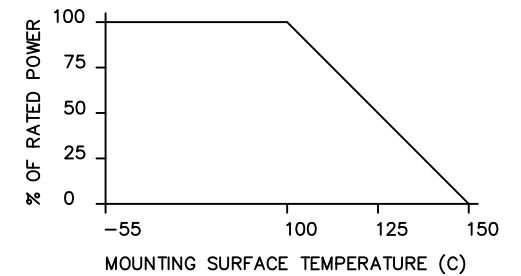
NOTES

- LEAD MATERIAL:
99.99% PURE SILVER,
.050 WIDE x .005 THICK
- LEAD LENGTH: .250 MIN.
- SUBSTRATE MATERIAL: BeO
COVER MATERIAL: Al₂O₃
- FLANGE MATERIAL: COPPER
PLATING: NICKEL
- DIMENSIONS IN [] ARE IN mm.

ELECTRICAL SPECIFICATIONS

INPUT POWER: 125 WATT
FREQUENCY: DC - 2.5 GHZ.
CAPACITANCE: 1.6 pF

POWER DERATING CURVE



PART NO.	VALUE	TOLERANCE
IPP-RB213LC-50	50 OHMS	+/- 5%
IPP-RB213LC-100	100 OHMS	+/- 5%

MATERIAL [3] [4]	DWN DG	DATE 11-07	
	ENG TJD	DATE 11-07	
FINISH [4]	MANUF TP	DATE 11-07	
TOLERANCE IN [MM] .XX ±.02 [.50] .XXX ±.010 [.254]	CAGE CODE: 437R2		P/N IPP-RB213LC-XXX
	SHEET OF 1 1	SCALE 4:1	