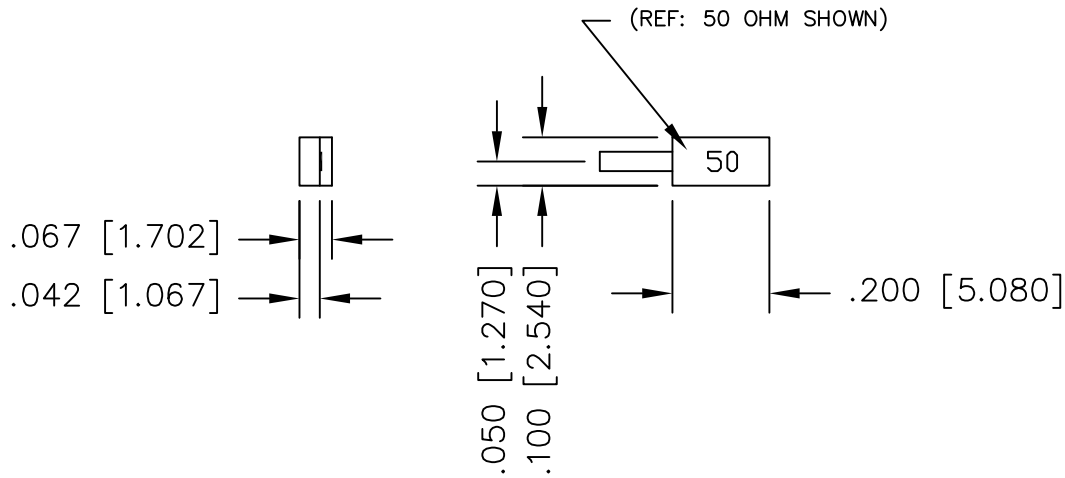


UNAUTHORIZED USE OF THIS
DRAWING IS STRICTLY PROHIBITED

DAR	REV	DESCRIPTION	APPVD	DATE
1053	A	INITIAL RELEASE	TJD	1-06
1075	B	CHANGE LEAD WIDTH	TJD	3-06
1095	C	ADD POWER DERATING CURVE	TJD	4-06
1106	D	ADD COVER MATERIAL	TJD	5-06
2035	E	SEE DAR	DG	9-09
2211	F	SEE DAR	DG	12-09



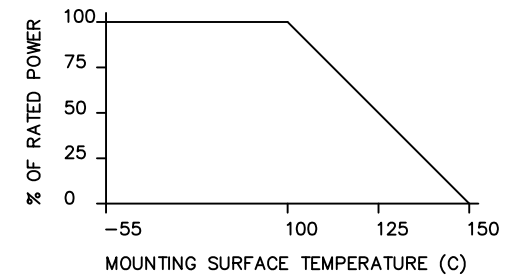
NOTES

- LEAD MATERIAL:
99.99% PURE SILVER
.040 [1.016] WIDE x .005 [0.127] THICK
- LEAD LENGTH: .150 [3.810] MIN.
- SUBSTRATE MATERIAL: BeO
COVER MATERIAL: Al₂O₃
- DIMENSIONS: INCHES, [mm]
- BOTTOM SIDE METALIZATION:
THICK FILM PLATINUM SILVER
- RoHS COMPLIANT

ELECTRICAL SPECIFICATIONS

INPUT POWER: 30 WATT
 FREQ: DC - 6.0 GHZ.
 VSWR: 1.13:1 DC - 3 GHZ.
 1.20:1 DC - 4 GHZ.
 1.50:1 DC - 6 GHZ.

POWER DERATING CURVE



PART NO.	VALUE	TOLERANCE
IPP-TB101-50	50 OHMS	+/- 5%
IPP-TB101-100	100 OHMS	+/- 5%

MATERIAL [3]	DWN DG	DATE 1/06				
	ENG TJD	DATE 1/06				
FINISH [5]	MANUF TP	DATE 1/06	TITLE			
	CAGE CODE: 437R2		TERMINATION, 30 WATT, FLANGELESS			
TOLERANCE IN [MM]	.XX ±.02 [.50] .XXX ±.010 [.254]	SHEET OF 1 1	SCALE 4:1	SIZE B	P/N IPP-TB101-XXX	REV. F