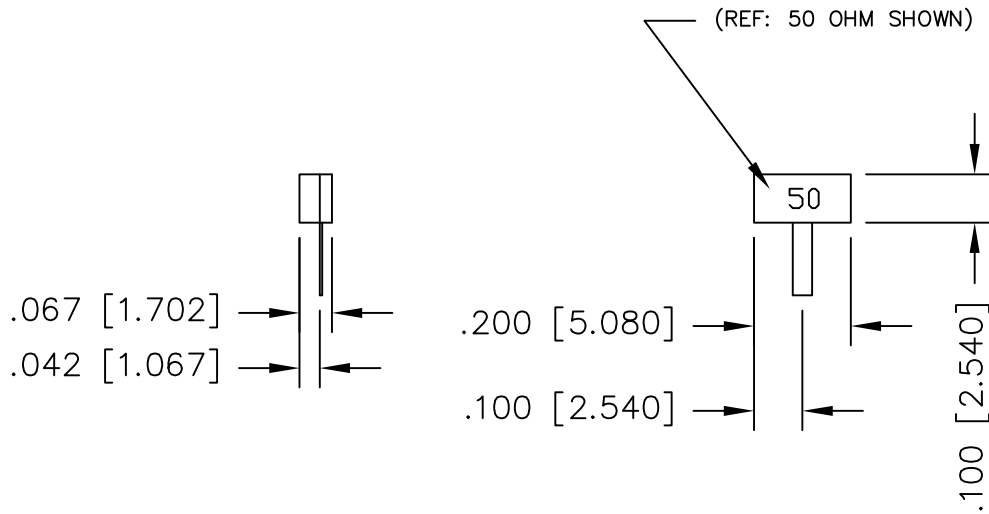


UNAUTHORIZED USE OF THIS
DRAWING IS STRICTLY PROHIBITED

DAR	REV	DESCRIPTION	APPVD	DATE
1221	A	INITIAL RELEASE	TJD	10-06
2035	B	SEE DAR	DG	9-09



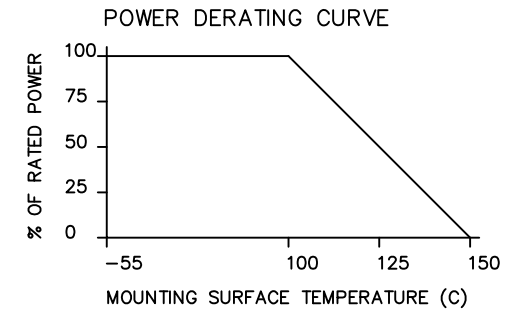
NOTES

1. LEAD MATERIAL:
99.99% PURE SILVER
.040 [1.016] WIDE x .005 [.172] THICK
2. LEAD LENGTH: .150 [3.810] MIN.
3. SUBSTRATE MATERIAL: BeO
COVER MATERIAL: Al₂O₃
4. DIMENSIONS: INCHES, [mm]
5. BOTTOM SIDE METALIZATION:
THICK FILM PLATINUM SILVER

ELECTRICAL SPECIFICATIONS

INPUT POWER: 30 WATT
 FREQ: DC - 4.2 GHz.
 VSWR: 1.20:1 DC - 3 GHz.
 1.30:1 @ 4.2 GHz.

PART NO.	VALUE	TOLERANCE
IPP-TB101-50	50 OHMS	+/- 5%
IPP-TB101-100	100 OHMS	+/- 5%



MATERIAL 3	DWN DG	DATE 10-06			
	ENG TJD	DATE 10-06			
FINISH 5	MANUF TP	DATE 10-06	TITLE		
	CAGE CODE: 437R2		TERMINATION, 30 WATT, FLANGELESS		
TOLERANCE IN [MM] .XX ±.02 [.50] .XXX ±.010 [.254]	SHEET OF	SCALE	SIZE	P/N	REV.
	1 1	4:1	B	IPP-TB101C-XXX	B