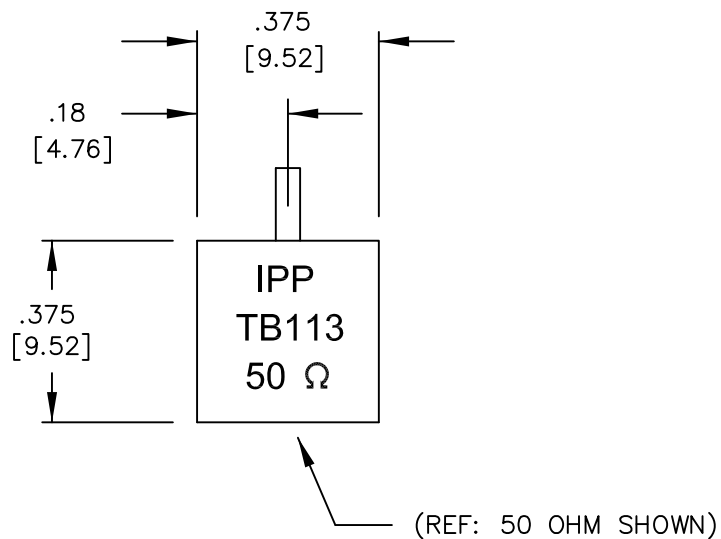
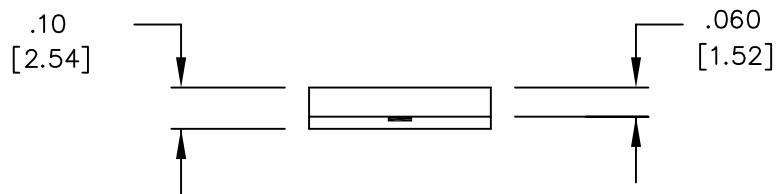


UNAUTHORIZED USE OF THIS  
DRAWING IS STRICTLY PROHIBITED

DAR	REV	DESCRIPTION	APPVD	DATE
1270	A	INITIAL RELEASE	TJD	3-07
1317	B	CHANGE TEMPERATURE TO 150 DEGREES	TJD	7-07



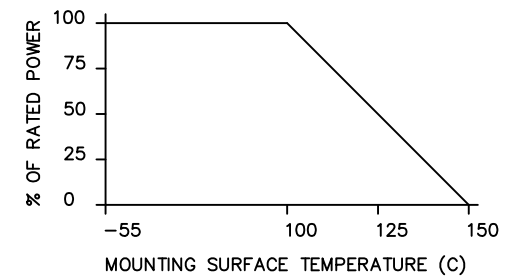
**NOTES**

- LEAD MATERIAL:  
99.99% PURE SILVER,  
.050 WIDE x .005 THICK
- LEAD LENGTH: .150 MIN.
- 3 SUBSTRATE MATERIAL: BeO  
COVER MATERIAL: Al<sub>2</sub>O<sub>3</sub>
- DIMENSIONS IN [ ] ARE IN mm.

**ELECTRICAL SPECIFICATIONS**

INPUT POWER: 300 WATT  
 FREQ: DC - 3.0 GHZ.  
 VSWR: 1.25:1 DC - 2.0 GHZ.  
 VSWR: 1.30:1 @ 3.0 GHz.

**POWER DERATING CURVE**



PART NO.	VALUE	TOLERANCE
IPP-TB113-50	50 OHMS	+/- 5%
IPP-TB113-100	100 OHMS	+/- 5%

MATERIAL <span style="border: 1px solid black; padding: 0 2px;">3</span>	DWN DG	DATE 3-07	<b>Innovative</b> <i>Power</i> <b>Products</b>
	ENG TJD	DATE 3-07	
FINISH PLATINUM SILVER	MANUF TP	DATE 3-07	TITLE TERMINATION, 300 WATT, FLANGELESS
	CAGE CODE: 437R2		P/N <b>IPP-TB113-XXX</b>
TOLERANCE IN [MM] .XX ±.02 [.50] .XXX ±.010 [.254]	SHEET OF 1 1	SCALE 2:1	