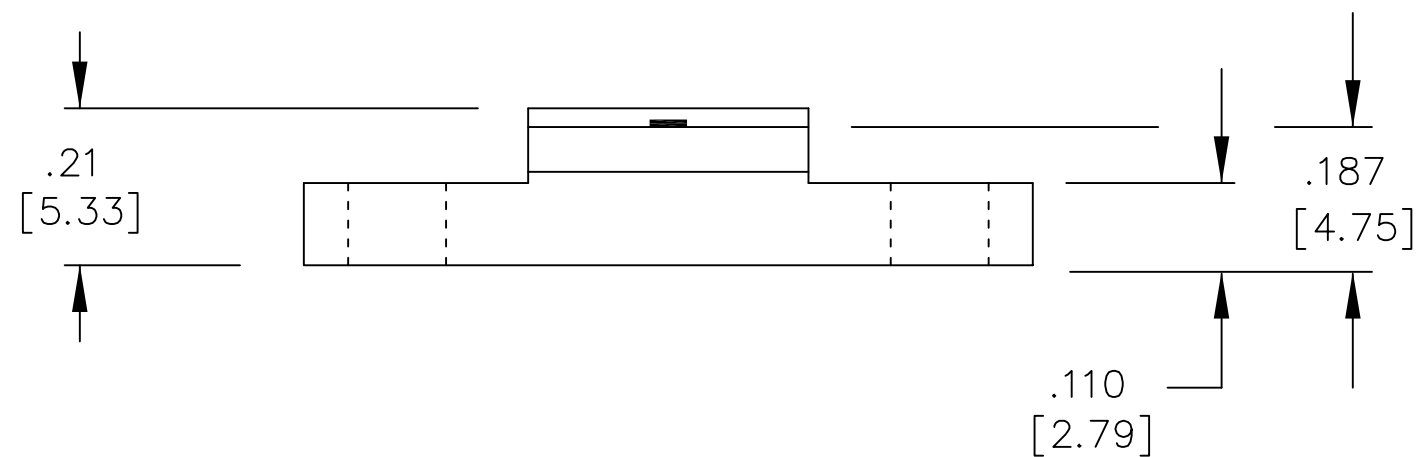
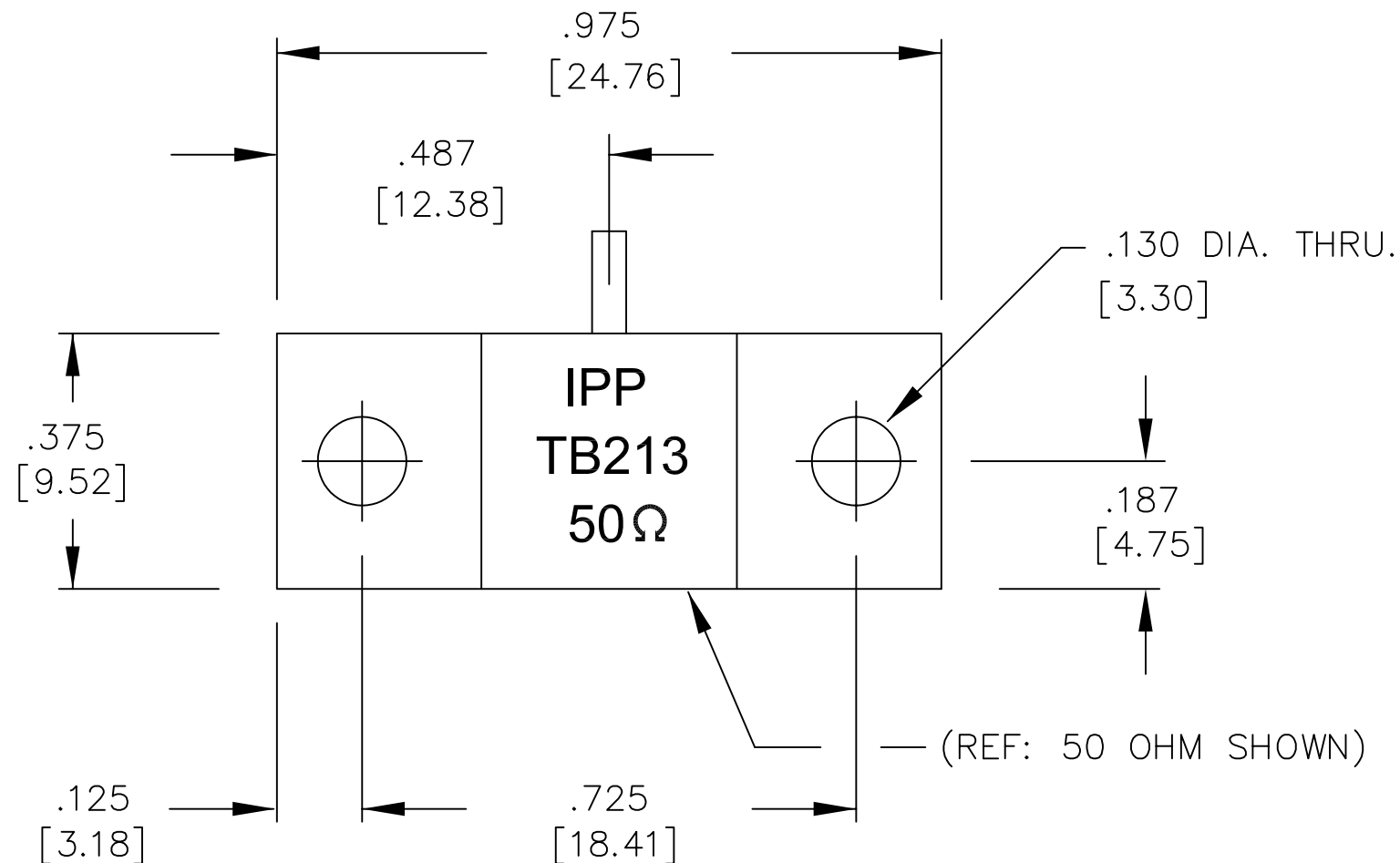


UNAUTHORIZED USE OF THIS
DRAWING IS STRICTLY PROHIBITED

DAR	REV	DESCRIPTION	APPVD	DATE
1270	A	INITIAL RELEASE	TJD	3-07
1322	B	ADD 100 OHM VALUE	TP	8-07
1408	C	POWER RATING WAS 250W	TJD	2-08



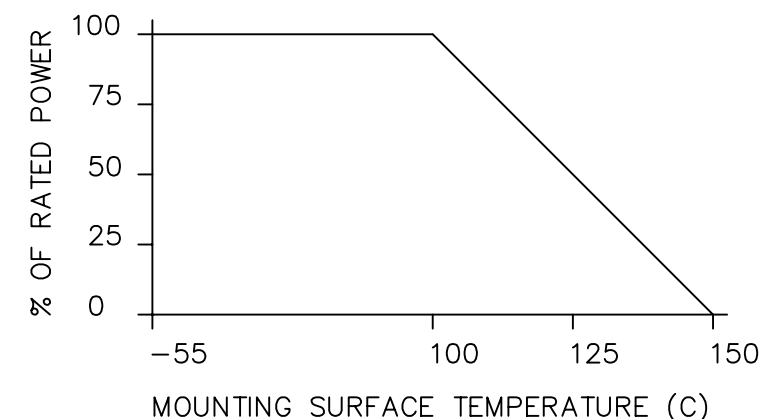
NOTES

- LEAD MATERIAL:
99.99% PURE SILVER,
.050 WIDE x .005 THICK
- LEAD LENGTH: .150 MIN.
- SUBSTRATE MATERIAL: BeO
COVER MATERIAL: Al₂O₃
- FLANGE MATERIAL: COPPER
PLATING: NICKEL
- DIMENSIONS IN [] ARE IN mm.

ELECTRICAL SPECIFICATIONS

INPUT POWER: 300 WATT
 FREQ: DC – 3.0 GHZ.
 VSWR: 1.25:1 DC – 2.0 GHZ.
 VSWR: 1.30:1 @ 3.0 GHZ.

POWER DERATING CURVE



PART NO.	VALUE	TOLERANCE
IPP-TB213-50	50 OHMS	+/- 5%
IPP-TB213-100	100 OHMS	+/- 5%

MATERIAL	[3] [4]	DWN	DG	DATE	3-07	Innovative <i>Power</i> Products
FINISH	[4]	ENG	TJD	DATE	3-07	
TOLERANCE		MANUF	TP	DATE	3-07	
IN [MM]	.XX ±.02 [.50] .XXX ±.010 [.254]	CAGE CODE: 437R2		TITLE	RESISTOR, 300 WATT, FLANGE	
		SHEET	OF	SCALE	P/N	REV.
		1	1	2:1	IPP-TB213-XXX	C