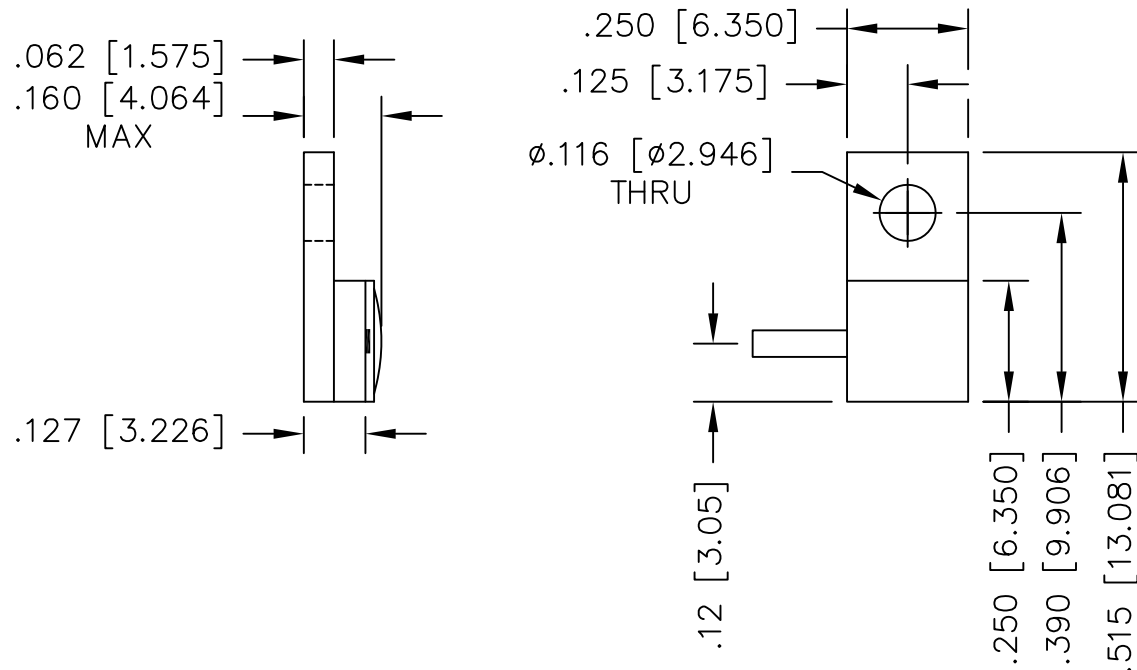


UNAUTHORIZED USE OF THIS  
DRAWING IS STRICTLY PROHIBITED

DAR	REV	DESCRIPTION	APPVD	DATE
1306	A	INITIAL RELEASE	TP	6-07
1497	B	CHANGE LEAD HEIGHT	DG	8-08
2190	C	SEE DAR	DG	12-09



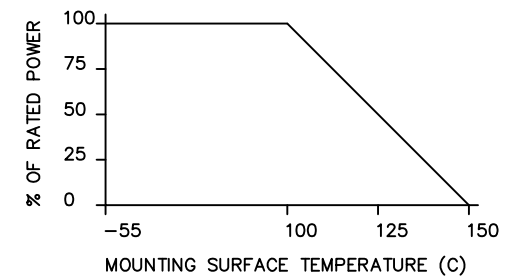
**NOTES**

- LEAD MATERIAL:  
99.99% PURE SILVER,  
.040 WIDE x .005 THICK
- LEAD LENGTH: .150 MIN.
- SUBSTRATE MATERIAL: BeO  
COVER MATERIAL: EPOXY
- FLANGE MATERIAL: COPPER  
PLATING: NICKEL
- DIMENSIONS: INCHES, [mm]

**ELECTRICAL SPECIFICATIONS**

INPUT POWER: 50 WATT  
 FREQ: DC - 6.0 GHZ.  
 VSWR: 1.10:1 DC - 4.2 GHZ.  
 1.25:1 DC - 6 GHZ.

POWER DERATING CURVE



PART NO.	VALUE	TOLERANCE
IPP-TB218-50	50 OHMS	+/- 5%
IPP-TB218-100	100 OHMS	+/- 5%

MATERIAL	[3] [4]	DWN DG	DATE 6-07	<b>Innovative Power Products</b>	
FINISH	[4]	ENG TJD	DATE 6-07		
TOLERANCE	.XX ±.02 [.50] IN [MM] .XXX ±.010 [.254]	MANUF TP	DATE 6-07	TITLE	TERMINATION, 50 WATT, FLANGE
		CAGE CODE: 437R2		P/N	IPP-TB218-XXX
		SHEET OF	SCALE	REV.	C
		1 1	4:1		