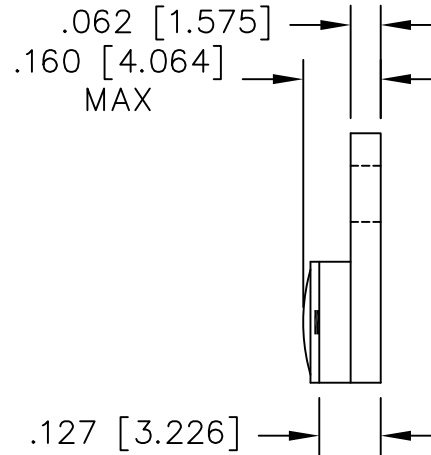
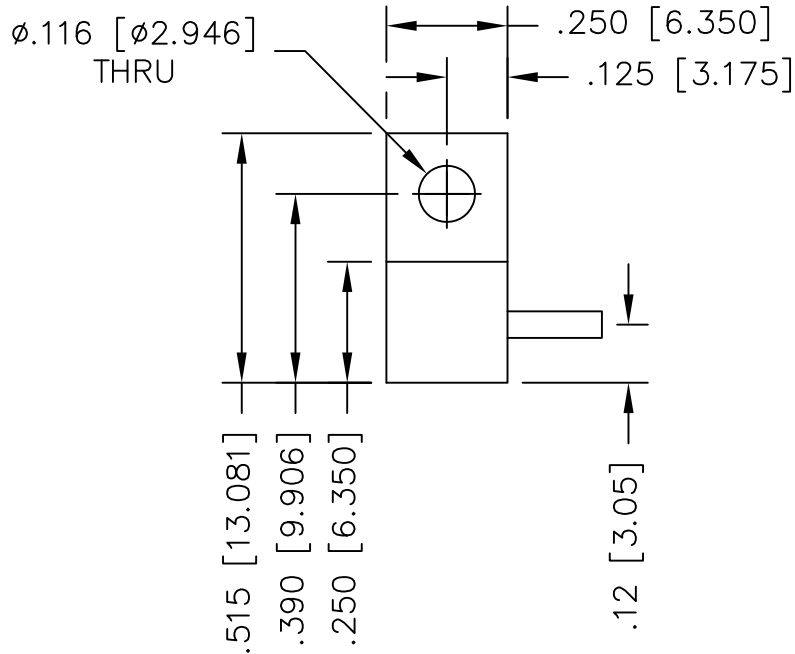


UNAUTHORIZED USE OF THIS
DRAWING IS STRICTLY PROHIBITED

DAR	REV	DESCRIPTION	APPVD	DATE
1306	A	INITIAL RELEASE	TP	6-07
1317	B	CHANGE COVER MATERIAL	TP	7-07
1497	C	CHANGE LEAD HEIGHT	DG	8-08
2190	D	SEE DAR	DG	12-09



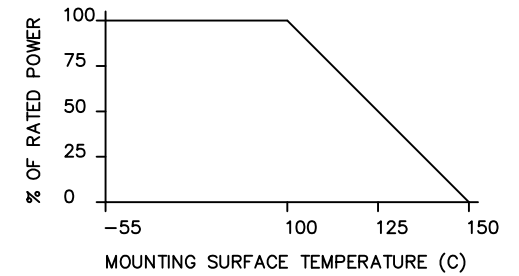
NOTES

- LEAD MATERIAL:
99.99% PURE SILVER,
.040 WIDE x .005 THICK
- LEAD LENGTH: .150 MIN.
- SUBSTRATE MATERIAL: BeO
COVER MATERIAL: EPOXY
- FLANGE MATERIAL: COPPER
PLATING: NICKEL
- DIMENSIONS: INCHES, [mm]

ELECTRICAL SPECIFICATIONS

INPUT POWER: 50 WATT
 FREQ: DC - 6.0 GHZ.
 VSWR: 1.10:1 DC - 4.2 GHZ.
 1.25:1 DC - 6 GHZ.

POWER DERATING CURVE



PART NO.	VALUE	TOLERANCE
IPP-TB218R-50	50 OHMS	+/- 5%
IPP-TB218R-100	100 OHMS	+/- 5%

MATERIAL [3] [4]	DWN DG	DATE 6-07		
	ENG TJD	DATE 6-07		
FINISH [4]	MANUF TP	DATE 6-07	TITLE TERMINATION, 50 WATT, FLANGE	
	CAGE CODE: 437R2		P/N IPP-TB218R-XXX	
TOLERANCE IN [MM]	.XX ±.02 [.50] .XXX ±.010 [.254]	SHEET OF 1 1	SCALE 4:1	REV. D