

UNAUTHORIZED USE OF THIS
DRAWING IS STRICTLY PROHIBITED

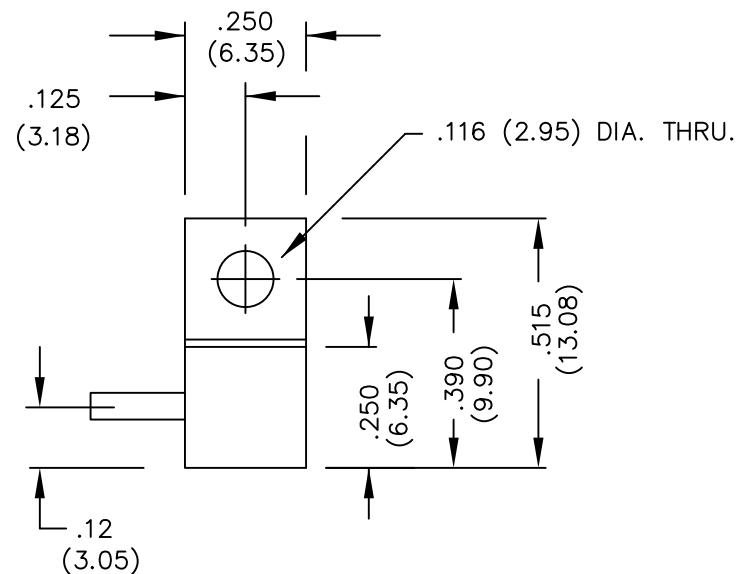
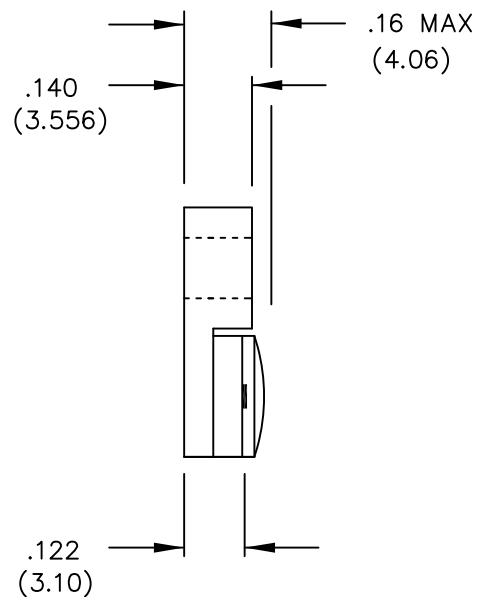
DAR	REV	DESCRIPTION	APPVD	DATE
1306	A	INITIAL RELEASE	TP	6-07

NOTES

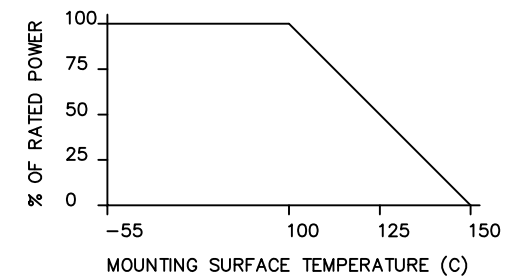
- LEAD MATERIAL:
99.99% PURE SILVER,
.040 WIDE x .005 THICK
- LEAD LENGTH: .150 MIN.
- 3 SUBSTRATE MATERIAL: BeO
COVER MATERIAL: Al₂O₃
- 4 FLANGE MATERIAL: COPPER
PLATING: NICKEL
- DIMENSIONS: INCHES, [mm]

ELECTRICAL SPECIFICATIONS

INPUT POWER: 100 WATT
 FREQ: DC - 6.0 GHZ.
 VSWR: 1.10:1 DC - 4.2 GHZ.
 1.25:1 DC - 6 GHZ.



POWER DERATING CURVE



PART NO.	VALUE	TOLERANCE
IPP-TB220-50	50 OHMS	+/- 5%
IPP-TB220-100	100 OHMS	+/- 5%

MATERIAL	3 4	DWN DG	DATE 6-07	Innovative <i>Power</i> Products
FINISH	4	ENG TJD	DATE 6-07	
TOLERANCE	.XX ±.02 [.50] IN [MM] .XXX ±.010 [.254]	MANUF TP	DATE 6-07	TITLE TERMINATION, 100 WATT, FLANGE
		CAGE CODE: 437R2		P/N IPP-TB220-XXX
		SHEET OF 1 1	SCALE 2:1	REV. A