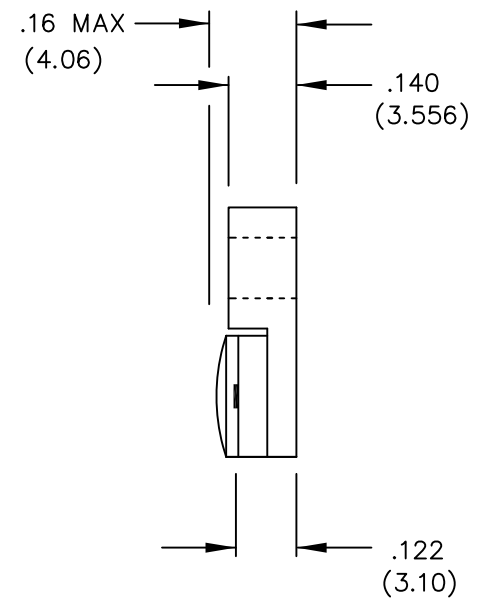
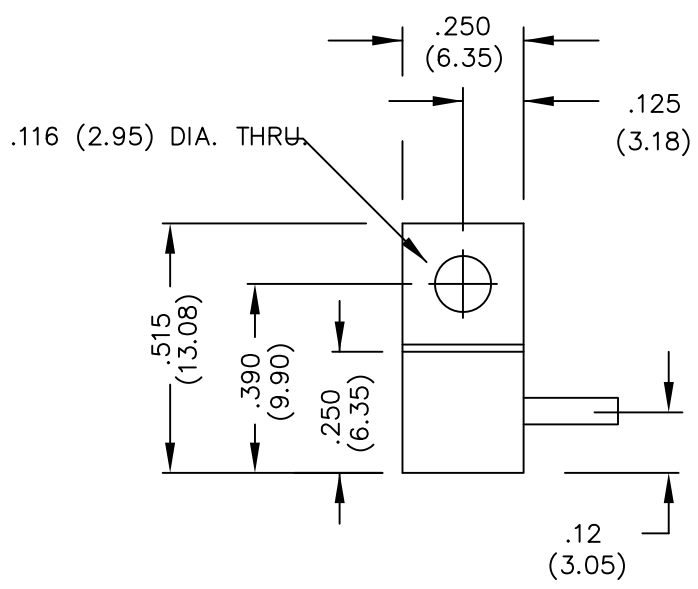


UNAUTHORIZED USE OF THIS
DRAWING IS STRICTLY PROHIBITED

DAR	REV	DESCRIPTION	APPVD	DATE
1306	A	INITIAL RELEASE	TP	6-07



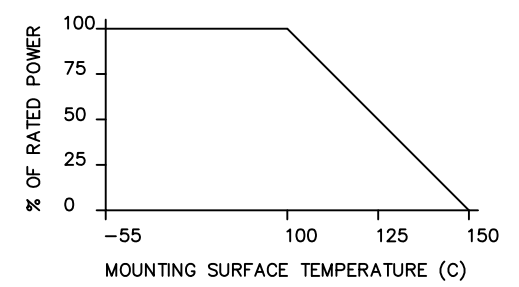
NOTES

- LEAD MATERIAL:
99.99% PURE SILVER,
.040 WIDE x .005 THICK
- LEAD LENGTH: .150 MIN.
- SUBSTRATE MATERIAL: BeO
COVER MATERIAL: Al₂O₃
- FLANGE MATERIAL: COPPER
PLATING: NICKEL
- DIMENSIONS: INCHES, [mm]

ELECTRICAL SPECIFICATIONS

INPUT POWER: 100 WATT
 FREQ: DC - 6.0 GHZ.
 VSWR: 1.10:1 DC - 4.2 GHZ.
 1.25:1 DC - 6 GHZ.

POWER DERATING CURVE



PART NO.	VALUE	TOLERANCE
IPP-TB220R-50	50 OHMS	+/- 5%
IPP-TB220R-100	100 OHMS	+/- 5%

MATERIAL	[3] [4]	DWN DG	DATE 6-07	Innovative Power Products
FINISH	[4]	ENG TJD	DATE 6-07	
TOLERANCE	.XX ±.02 [.50] IN [MM] .XXX ±.010 [.254]	MANUF TP	DATE 6-07	TITLE
		CAGE CODE: 437R2		TERMINATION, 100 WATT, FLANGE
		SHEET OF 1 1	SCALE 2:1	P/N
				IPP-TB220R-XXX
				REV. A